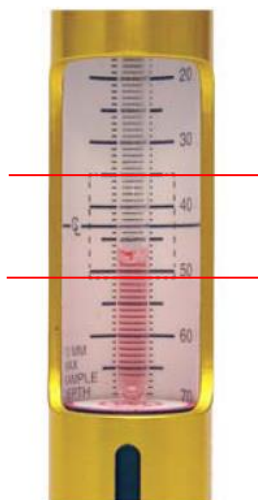


# Common Problem #1

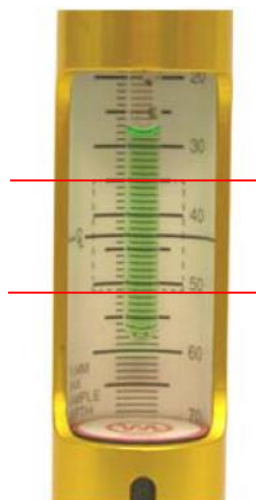
Always center the sample position on the detected region



0.3mL

Positioned too low

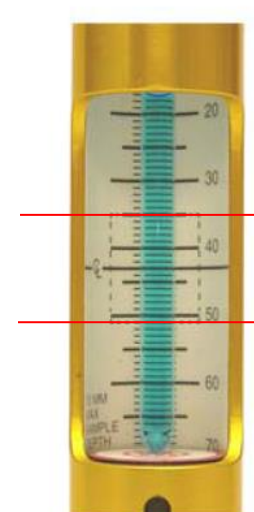
Solvent NOT in  
detected region



0.4 mL

Centered

Solvent covers  
detected region



0.7mL

**Adjusted to  
Maximum Depth**

**\*Recommended\***

# Common Problem #2

Keep the Lock Power Low and the Lock Gain High

LOCKED SPIN: 20 VT: OFF

[ 757]	[Slider]			
20	-1+	-4+	-16+	-64+
[ 9]	[Slider]			
lockpower	-1+	-4+	-16+	-64+
[ 44]	[Slider]			
lockgain	-1+	-4+	-16+	-64+
[ 103]	[Slider]			
lockphase	-1+	-4+	-16+	-64+
[ 20]	[Slider]			
spin	-1+	-4+	-16+	-64+

Temp. See lab staff.